

*WORTON  
ROCK*

# *THE BUDGET 2011*



CHARTERED ACCOUNTANTS

George Osborne presented his second Budget on Wednesday 23 March 2011.

In his statement he said that the “Budget is about reforming the nation’s economy, so that we have enduring growth and jobs in the future”.

Towards the end of last year the government issued the majority of the clauses, in draft, of Finance Bill 2011 together with updates on consultations. The publication of the draft Finance Bill clauses is part of the government’s improvements in the way tax policy is developed, communicated and legislated. The Budget updates some of these previous announcements and also proposes further measures. Some of these changes apply from April 2011 and some take effect at a later date, so the timing needs to be carefully considered.

Our summary focuses on the issues likely to affect you, your family and your business. To help you decipher what was said we have included our own comments.

If you have any questions please do not hesitate to contact us for advice.

## Contents

	Page
Personal tax	2 - 4
Pensions tax	5 - 6
Business tax	7 - 10
Employment issues	11 - 12
Capital taxes	13
Other matters	14
Rates and allowances	15 - 16

## Main Budget proposals

- An additional 1% cut in the main rate of corporation tax to 26% from April 2011.
- Enhanced tax incentives for investment in higher risk companies and for SMEs investing in research and development.
- Reintroduction of Enterprise Zones.
- Entrepreneurs’ Relief limit doubled to £10 million.
- An increase in the mileage rate payable to own car drivers.
- Consultation on integrating income tax and national insurance contributions.
- Reduced inheritance tax rates for those giving one tenth of their estate to charity.

## Previous announcements

Some of the changes detailed in this summary have been the subject of earlier announcements. Here is a reminder of some of the more important ones:

- Changes to tax and national insurance rates and thresholds
- Pensions - new regimes for tax reliefs and annuities
- Furnished holiday lettings changes
- The Corporate Tax Road Map.

The Budget proposals may be subject to amendment in a Finance Act. You should contact us before taking any action as a result of the contents of this summary.

# PERSONAL TAX

## The personal allowance for 2011/12

For those aged under 65 the personal allowance will be increased by £1,000, from £6,475 to £7,475 for 2011/12.

However a new concept of withdrawing the personal allowance for those with adjusted net income over £100,000 was introduced in 2010/11 and will continue for 2011/12. The reduction in the allowance is by £1 for every £2 of adjusted net income above the income limit. Adjusted net income for this purpose is broadly all income after adjustment for pension payments, charitable giving and relief for losses.

### Comment

If adjusted net income is £112,950 or above in 2010/11 or £114,950 or above in 2011/12, there will be no personal allowance. If adjusted net income can be reduced to below these figures, some personal allowance will be given, so the tax saving is rather more than the 40% higher rate of tax.

Consider:

- whether you can defer income to 2011/12 (for example if you are a director/ shareholder of a company)
- paying pension contributions
- making Gift Aid donations.

## Tax bands and rates for 2011/12

The basic rate limit will be reduced from the current £37,400 to £35,000. Therefore an individual will pay 40% tax rather than the basic rate of 20% when their total income exceeds £42,475.

The 50% rate of income tax (the 'additional rate') will continue for 2011/12. This applies to taxable income above £150,000.

### Comment

In his speech the Chancellor stated that the 50% additional rate of tax should be regarded as being 'temporary' and would be subject to review.

Dividend income as part of total income is taxed at 10% where it falls within the basic rate band, 32.5% where liable at the higher rate of tax and 42.5% where liable to the additional rate of tax.

### Comment

As the basic rate limit has been reduced for 2011/12 more individuals will pay tax at the higher rate increasing their overall liability.

## The personal allowance and basic rate band limit for 2012/13

For those aged under 65 the personal allowance will be increased from £7,475 to £8,105 for 2012/13.

The basic rate limit will be reduced from £35,000 to £34,370 for 2012/13.

## National Insurance Contributions (NICs)

Changes to the rates of NICs had been announced by the previous government and the current government confirmed that the rate changes would be made. From 6 April 2011 a further 1% will apply to the rates applicable to employers, employees and the self-employed. Details are shown on the Rates and Allowances page.

Changes to the thresholds at which NICs are payable will increase significantly from 6 April 2011. The level at which employees start to pay contributions will increase to £139 per week (the primary threshold) and for employers the weekly limit will be £136 (secondary threshold). The primary and secondary thresholds were aligned at £110 for 2010/11.

The upper earnings limit and the upper profits limit will continue to be aligned with the income tax higher rate threshold of £42,475.

## Comment

The increase in the threshold at which employers and employees will start to make contributions will offer some protection for those at the lower end of the earnings scale from the increased contribution percentages.

## Income tax and NICs reform

The government has announced it will consult on the options, stages and timing of reforms to integrate the operation of income tax and NICs.

## Comment

The government will issue a consultation document later this year setting out the differences in the current income tax and NIC system. They have confirmed that NICs will not be extended to individuals above the State Pension age or to other forms of income such as pensions, savings and dividends.

## Furnished Holiday Lettings (FHL)

The tax treatment of FHL has been advantageous for many years. Provided that certain conditions are met, FHL are treated as a trade. This can be preferable to the tax regime for normal let property in a number of specific areas.

Currently the FHL treatment potentially applies to properties in the EEA but certain conditions need to be satisfied including that the property must be:

- available for letting for at least 140 days a year and
- actually let for at least 70 days.

From April 2011 there will be two types of FHL business; a UK FHL business consisting of properties in the UK and an EEA FHL business consisting of properties in one or more EEA states. FHL losses will only be able to be set against income from the same FHL business.

From April 2012 the property must be available for letting for at least 210 days a year (generally the tax year) and actually let for at least 105 days.

A 'period of grace' will be introduced to allow businesses that do not continue to meet the 'actually let' requirement for one or two years to elect to continue to qualify throughout that period.

## Comment

If the new conditions are met it is only the loss relief provisions which are being restricted. The other potential tax advantages, in particular the property being regarded as a trading asset for capital gains tax, remain.

## Junior Individual Savings Account (Junior ISA)

The government will introduce a new Junior ISA product which will be available for UK resident children under the age of 18 who do not have a Child Trust Fund account. Junior ISAs will be tax advantaged and will have many features in common with existing ISAs. They will be available as cash or stocks and share based products.

The government expects that Junior ISAs will be available from autumn 2011.

## Enterprise Investment Scheme (EIS) and Venture Capital Trusts (VCTs)

EIS and VCTs are designed to encourage private individuals to invest in smaller high-risk unquoted trading companies. While the EIS

requires an investment to be made directly into the shares of the company, VCTs operate by indirect investment through a mediated fund.

Currently EIS investors may be given income tax relief at 20% on their investments of up to £500,000 a year. Legislation will be introduced to increase the rate of tax relief to 30% for shares issued on or after 6 April 2011, subject to State aid approval.

## Future changes

Subject to State aid approval, legislation will be introduced to make the following changes to the EIS and for shares issued on or after 6 April 2012.

- The thresholds for the size of the company which may benefit from both types of investment will be increased to fewer than 250 employees and £15 million gross assets before the investment.
- The annual amount which can be invested in an individual company is to rise to £10 million.
- The annual amount that an individual can invest through EIS is to increase to £1 million.

## Tainted donations to charity

New rules will replace the existing substantial donor rules for donations made on or after 1 April 2011.

The rules will deny tax relief on the donation where one of the main purposes of the donation is to receive an advantage for the donor or connected person directly or indirectly from the charity. There is no monetary limit on the amount of the donation which may be caught by these rules. These donations will be 'tainted donations'.

## Gift Aid donor benefit limit

Legislation will be introduced to increase from £500 to £2,500 the maximum value of the benefits that donors may receive as a result of making a donation to charity of more than

£10,000 under Gift Aid. The new limit will be subject to the existing rule that the benefit must not exceed 5% of the gift. The new rules will apply for benefits received as a consequence of donations made on or after 6 April 2011 by individual donors (similar changes will be made to the corporate Gift Aid rules).

## Comment

The measure will enable charities who wish to do so to thank their larger donors in a more generous way. HMRC have also announced that they will publish revised guidance to clarify a number of issues and misunderstandings on Gift Aid benefits.

## Gift Aid smaller donations

From April 2013 charities that receive small donations of up to £10 will be able to apply for a Gift Aid style repayment without the need to obtain Gift Aid declarations for those donations. The amount of donations on which the new repayment can be claimed will be capped at £5,000 per year, per charity.

## Gifts of art

The government will consult on introducing a tax reduction for taxpayers who give a work of art or historical object of national importance to the State.

## Non-domiciled taxation review

The government will consult on measures to introduce the following reforms from April 2012. The measures will:

- remove the tax charge when non-domiciles remit foreign income or capital gains to the UK for the purpose of commercial investment in UK businesses
- increase the existing £30,000 annual charge to £50,000 for non-domiciles who have been UK resident for 12 or more years and who wish to retain access to the remittance basis of tax
- simplify some aspects of the current rules to remove undue administrative burdens.

# PENSIONS TAX

## Restriction on tax relief for pension contributions

The new tax regime for pension contributions will take effect for the 2011/12 tax year. The legislation is included in Finance Bill 2011.

The basic proposal is that an annual allowance (AA) will be set at £50,000. Any contributions in excess of the AA would be charged to tax on the individual as their top slice of income. Contributions include contributions made by an employer.

The rules will apply for the 2011/12 tax year and, in particular, to pension input periods (PIPs) ending in the tax year 2011/12 but beginning earlier.

### Example

Anthony is a director/shareholder of a family company and has taxable income of £120,000 in 2011/12. For several years, the company has been paying monthly contributions into a pension scheme for his benefit totalling £60,000 per year. He does not make any pension contributions himself.

The charge will be:

Pension contribution in 2011/12	£60,000
Less AA	(£50,000)
Excess	£10,000
Taxable at 40%	= £4,000

A PIP does not have to be the same as the tax year and if a person has several schemes, each scheme can have a different PIP. Special transitional rules may apply to pension savings made before 14 October 2010 that fall into 2011/12 PIPs.

### Comment

Care is needed if payment of significant contributions is being considered in the

current tax year. If a PIP does not coincide with the tax year, an amount paid this year may result in a charge under these new rules in 2011/12.

## Carry forward of unused AA

To allow for individuals who may have a significant amount of pension savings in a tax year but smaller amounts in other tax years, a carry forward of unused AA will be introduced.

The broad effect is that unused AA of up to £50,000 per year can be carried forward for the next three years. When looking at whether there is unused AA to bring forward from 2008/09, 2009/10 and 2010/11, the AA for those years is deemed to have been £50,000.

### Example

Bob is a self employed builder. In the previous three years Bob has made gross contributions of £40,000, £20,000 and £30,000 to his pension scheme. As he has not used all of the £50,000 AA in earlier years, he has £60,000 unused AA that he can carry forward to 2011/12.

Together with his current year AA of £50,000, this means Bob can make a contribution of £110,000 in 2011/12 without having to pay a tax charge.

## Members of defined benefit schemes

In a defined benefit scheme, individuals accrue a right to an amount of annual pension when they retire. This right does not necessarily equate with the contributions made by themselves and their employers. Therefore the proposals require a notional value of contributions to be computed. The notional contributions should reflect the amounts needed

to be invested in a money purchase scheme to deliver the extra annual pension accruing in a defined benefit scheme. A 'flat-factor' method will be used and will be set at 16.

## Comment

The flat-factor of 16 means, broadly, that an increase in annual pension benefit of £1,000 would be deemed to be worth £16,000. So if an individual is in a final salary defined benefit scheme and has a promotion resulting in a pay rise, the deemed contribution may be very high.

In some situations, the individual will be able to require the tax bill to be met by the pension fund (with a commensurate reduction in the pension entitlement).

## The lifetime limit

The lifetime limit sets the maximum figure for tax-relieved savings in pension funds and rose to £1.8m for 2010/11. The government has announced that the limit for 2012/13 will be reduced to £1.5 million. Those with savings above £1.5 million or who believe the value of their pension fund will rise above this level through investment growth without any further contributions or pension savings, will be able to apply for a new personalised lifetime allowance of £1.8 million, providing they cease accruing benefits in all registered pension schemes before 6 April 2012.

## Comment

The lifetime limit has to be considered when key events happen such as when a pension is taken for the first time. If the value of the scheme exceeds the limit a tax charge of 55% of the excess is due if the excess is taken as a lump sum.

## Requirement to buy an annuity

Legislation will be introduced in Finance Bill 2011 to remove pensions tax rules that currently create an obligation for members of registered pension schemes to secure an income, usually by buying an annuity, by age 75.

It will involve changes to annuitisation requirements, pensions tax treatment and rules applying to income drawdown arrangements.

The legislation will have effect from 6 April 2011. In summary, from that date:

- it will enable individuals with defined contribution pension savings from which they have not yet taken a pension to defer a decision to take benefits from their scheme indefinitely
- it will enable individuals with a lifetime pension income of at least £20,000 a year to gain access to their drawdown pension funds without any cap on the withdrawals they may make
- the age 75 ceiling will be removed from most lump sums to which entitlement arises
- the tax rate on lump sum death benefits will be 55%
- the altered withdrawal limits will have effect for all new drawdown pension arrangements and some drawdowns made before 6 April 2011 where the individual's 75th birthday falls within certain dates.

## Comment

The main cost to the individual of the increased flexibility offered is the 55% charge on lump sum death benefits. The charge will not apply however to death benefits for those who die before age 75 without having taken a pension. In addition inheritance tax changes are proposed (see below).

## Inheritance tax (IHT) and drawdown

With effect from 6 April 2011:

- IHT will not typically apply to drawdown pension funds remaining under a registered pension scheme, including when the individual dies after reaching the age of 75.
- IHT anti-avoidance charges that apply to registered pension schemes and Qualifying Non UK Pension Schemes where the scheme member omits to take their retirement entitlements (eg a failure to buy an annuity) will be removed.

# BUSINESS TAX

## Corporation tax rates

Legislation will be introduced in Finance Bill 2011 to reduce the main rate of corporation tax from 28% to 26% for the Financial Year commencing 1 April 2011 and then to 25% for the Financial Year commencing 1 April 2012. The main rate of corporation tax generally applies to companies with profits of more than £1.5 million. It had previously been announced that the main rate would reduce from 28% to 27% followed by further 1% graduated reductions until it reached 24% by 1 April 2014. Instead the main rate is set to reduce to 23% by 1 April 2014.

The small profits rate of corporation tax, which generally applies to companies with up to £300,000 of profits, is to reduce from 21% to 20% also with effect from 1 April 2011. This had already been announced.

The effective marginal corporation tax rate for profits between £300,000 and £1.5 million will be 27.5% from 1 April 2011.

## Associated companies for corporation tax rates

The upper and lower limits for corporate tax rates are divided equally between a company and its 'associated' companies. A company is associated with another company if one of them has control of the other or if both are under the control of the same company or person(s).

The shares of direct relatives, business partners and some trustees can be attributed to a person for the control test. For example if a husband owns no shares in a company, he may be deemed to own the company via his wife's shareholding.

A change to the associated company rules will be included in Finance Bill 2011 with effect for accounting periods ending on or after 1 April 2011.

It is proposed to amend the circumstances in which rights held by linked persons are attributed between them to establish control. Attributions will only be made where there is 'substantial commercial interdependence' between the businesses being run in the companies.

When considering whether there is 'substantial commercial interdependence' HMRC will have regard to the degree of financial, economic or organisational links which exist, or have existed, or might be expected to exist between the relevant activities/companies involved.

## Comment

This is a welcome proposed change in the law. If for example a husband and wife each own a company and there is little connection between the businesses run by each company, the two companies will no longer automatically be treated as associated.

The difficulty will be in deciding at what point 'substantial commercial interdependence' exists.

## The Corporate Tax Road Map

The government's aim is to create the most competitive corporate tax regime of the major world economies.

The Corporate Tax Road Map sets out how the government intends to approach reform of the corporate tax system over the next five years.

The principles it will adopt include:

- lowering corporate tax rates but reducing the reliefs and allowances available
- avoiding unnecessary changes to tax legislation and ensuring that any changes improve the long-term stability of the corporate tax system
- adapting the tax system for the effects of globalisation and technological developments over the last 20 years.

The focus of the Road Map is on large corporates as these increasingly operate across national borders and may choose not to have their headquarters in the UK.

The main areas of tax changes in the next five years will be to the:

- Controlled Foreign Company (CFC) regime
- taxation of innovation and intellectual property (IP)
- taxation of foreign branches.

## CFC reform

Currently the CFC rules may apply where a UK company has a subsidiary which operates in a country with a relatively low rate of corporate tax. In certain circumstances the profits of the subsidiary may be subject to UK corporate tax.

Interim improvements to the existing CFC rules will be introduced in Finance Bill 2011 and more fundamental proposed changes have been announced for consultation with interested parties. The legislative outcomes of the proposals will be included in Finance Bill 2012.

The main interim improvement will be to exempt a CFC which carries on a range of 'foreign to foreign' activities involving transactions wholly or partly with other group companies. The new rules will have effect for accounting periods beginning on or after 1 January 2011.

The more fundamental proposed changes will operate in a targeted and more territorial way by bringing within a CFC charge only the proportion of overseas profits that have been artificially diverted from the UK. A consultation document describing the new regime is to be published in May 2011 followed by draft legislation in autumn 2011 for inclusion in Finance Bill 2012.

## Comment

The current CFC rules are seen by the government and business to go further than they need to protect the UK tax base. The changes are targeted at large multinational companies.

## Taxation of innovation and IP

The government is consulting on a preferential regime for profits arising from patents, to be known as a Patent Box. The intention is to introduce a 10% corporation tax rate for profits arising from patents from 1 April 2013. A consultation document will be issued in May 2011 with legislation proposed for Finance Bill 2012.

## Comment

It is hoped that the Patent Box will encourage companies to locate the high-value jobs and activity associated with the development, manufacture and exploitation of patents in the UK.

## Research and Development (R&D) Tax Credits

Subject to State aid approval, legislation will be introduced in Finance Bill 2011 to increase the rate of the additional deduction for expenditure on R&D for companies that are small or medium-sized enterprises (SMEs) from 75% to 100% for expenditure incurred on or after 1 April 2011, giving a total deduction of 200%. The rate of Vaccine Research Relief for SMEs will be reduced to 20% from the same date.

The government also plans to introduce further changes subject to consultation and State

aid approval in Finance Bill 2012 in respect of expenditure incurred on or after 1 April 2012 as follows:

- to abolish the rule limiting a company's payable R&D tax credit to the amount of PAYE and NICs it pays
- to abolish the £10,000 minimum expenditure condition
- to change the rules governing the provision of relief for work done by subcontractors under the large company scheme
- to increase the rate of the additional deduction for expenditure on R&D for SMEs by a further 25% to give a total deduction of 225%
- Vaccine Research Relief will not be available for SMEs.

## Taxation of foreign branches

A foreign branch exists when a UK company carries on part of its trade in another country without establishing a separate trading subsidiary.

Legislation will be introduced in Finance Bill 2011 to exempt the profits of foreign branches of UK resident companies from corporation tax, precluding the need for credit relief to prevent double taxation.

The exemption will only apply if companies irrevocably elect to opt into the exemption regime. The election will apply to all present and future branches of the company.

Otherwise the existing rules will apply.

## Comment

Currently UK companies are subject to corporation tax on the profits of their foreign branches, with credit given for foreign tax paid on the same profits. In cases where the foreign tax paid is less than the UK tax, the company must pay a 'top up' of UK tax.

If the branch makes losses then these can be offset against UK income. In contrast the exemption regime will not give relief for losses.

## Corporate capital gains simplification

Following extensive consultation on simplification of the capital gains rules for groups of companies, legislation will be introduced to modernise the 'degrouching charge' rules.

Under current law, if a company leaves a group holding an asset acquired from a fellow group member within the previous six years, any gain or loss that had been deferred on that asset acquisition is reinstated as a chargeable gain or loss (a degrouching charge) separate to any gain or loss incurred on the disposal of the shares in the company.

It is proposed that where a company leaves a group as a result of a disposal of its shares, any degrouching charge will be treated as additional consideration for the disposal. This ensures that shareholder reliefs, such as the substantial shareholdings exemption, will also apply to the degrouching charge.

Changes to the degrouching charge rules will apply to deemed disposals made on or after Royal Assent.

Other proposed changes to corporate capital gains are to:

- remove some existing restrictions on the use of capital losses within a group of companies after acquisition of a business
- replace a complex set of anti-avoidance rules on 'value shifting' with a clearer purpose-based rule.

## Capital allowance changes

Finance Bill 2011 will include the following previously announced reductions to capital allowances from April 2012:

- a reduction in the Annual Investment Allowance from the current £100,000 to £25,000
- a reduction in the writing down allowance rates from 10% and 20% to 8% and 18% respectively.

## Short life asset extension

Legislation is to be introduced to enable businesses incurring expenditure on an item of plant or machinery from April 2011 onwards to make a short life asset (SLA) election in respect of that item if they expect to sell or scrap it within an eight year cut-off period. This is an extension from the current four year cut-off period. The cut-off period starts at the end of the chargeable period in which the expenditure is incurred.

The impact of an SLA election is that the item is placed into a single asset pool. Entitlement to capital allowances until the asset is sold or scrapped follows normal rules but on disposal any remaining balance after taking account of disposal proceeds is allowed as a further allowance. This is the advantage of such an election but a charge can arise instead where overall allowances and disposal proceeds exceed the original expenditure.

### Comment

Certain items of plant and machinery are not eligible for SLA treatment - the most notable being cars.

## Review of green technology lists

Businesses purchasing designated plant and machinery which is energy saving, reduces water use or improves the quality of water are eligible for 100% capital allowances. The qualifying technologies are reviewed annually. The main change this year includes the addition of a new technology - efficient hand dryers. Also the qualifying criteria for automatic metering and targeting equipment will be simplified.

### Comment

The current lists of qualifying technologies are available on the internet at [www.eca.gov.uk](http://www.eca.gov.uk)

## Review of IR35

Following publication of the Office of Tax Simplification's review of small business tax, the government has decided to retain IR35 as abolition would put substantial revenue at risk. The government will however make improvements in the way IR35 is administered. The improvements will include guidance on those types of cases HMRC view as outside the scope of IR35.

# EMPLOYMENT ISSUES

## Approved mileage allowance payments (AMAP)

The AMAP rates can be used to claim the cost of business mileage in an employee's own vehicle. The rates cover cars, vans, motorcycles and bicycles. Where an employer pays less than the published rates, employees can make a claim for tax relief for the shortfall.

With effect from 6 April 2011 the rate of the AMAP for cars and vans will be increased from 40p per mile to 45p per mile for the first 10,000 miles of business travel in the tax year. The rate for mileage above 10,000 miles will remain at 25p per mile.

### Comment

This may mean that drivers receiving mileage allowances in excess of the AMAP will see a reduction in their tax and NICs liability. For those drivers who receive less than the AMAP their claim for tax relief on the shortfall will be increased.

An allowance for passenger payments currently in place for employees at 5p per passenger per mile will be extended to volunteers who carry passengers as part of their volunteering duties. This extension will apply with effect from 6 April 2011.

## Company car fuel benefit charge

Employees and directors who are provided with a company car and who also receive free fuel from their employers are subject to the fuel benefit charge. The benefit charge is determined by multiplying a set figure by the appropriate percentage for the car based on its CO<sub>2</sub> emissions. The current set figure of £18,000 will be increased to £18,800 from 6 April 2011.

## Company car tax rate 2013/14

Legislation will be introduced in Finance Bill 2011 to increase the appropriate percentages by 1% for all vehicles with CO<sub>2</sub> emissions between 95gm/km and 220gm/km from April 2013. Zero emission cars will remain at 0% and ultra low emissions cars with emissions up to 75gm/km will remain at 5%.

## Employer-supported childcare

Changes had previously been announced to the tax breaks for employer-supported childcare.

There is currently a £55 per week limit on the amount of exempt income associated with childcare vouchers and directly contracted childcare for employees in an employer's scheme. This will be restricted in cases where an employee joins a scheme on or after 6 April 2011 and their earnings and taxable benefits are liable to tax at the higher rates.

Employers will be required, at the beginning of the relevant tax year, to estimate the level of contractual employment earnings that their employee is likely to receive during that year, ignoring potential bonus and overtime payments, but including other known taxable benefits. Income for the purpose of the calculation will be reduced by the personal allowance as shown on the individual's tax code for the relevant employment.

The effect will be to ensure that the monetary equivalent of tax relief entitlement for all taxpayers will be £11 per week.

Anyone in a scheme by 5 April 2011 will not be affected by these changes as long as they remain within the same scheme.

## Comment

These changes will apply to directly contracted childcare and childcare voucher schemes but will only affect individuals joining a scheme from 6 April 2011. The existing tax and NICs exemptions for workplace nurseries will remain.

## Disguised remuneration

Legislation will be introduced from 6 April 2011 to tackle arrangements using trusts and other vehicles to reward employees which seek to avoid, defer or reduce tax liabilities.

In many cases these third party arrangements allow an employee to enjoy the full benefit of a sum of money paid or assets provided while arguing that, because of the structure of the arrangements, there is no legal right to the money or assets.

Legislation will be introduced to ensure that where a third party makes provision of what is in substance a reward or loan, in connection with the employee's employment, the employer will be required to account for PAYE and NICs. This will be based on the sum of money made available or the cost or value of the reward.

The legislation may catch arrangements made on or after 9 December 2010 and before 6 April 2011 unless the employee repays sums or returns assets before 6 April 2012.

The scope of the legislation will include Employer Financed Retirement Benefit Schemes, in keeping with the restriction of pensions tax relief on registered pension schemes.

Third party arrangements that are not tax-avoidance will be excluded, in so far as this is possible without creating additional avoidance risks, from the effect of this measure.

## Comment

Some of the types of transaction which will be chargeable to tax under this measure (including the earmarking of funds held in a discretionary trust) are not accepted by HMRC as effective in avoiding tax under the present law. HMRC have stated they will continue to challenge such transactions.

# CAPITAL TAXES

## Capital Gains Tax (CGT) annual exemption

The annual exempt amount for CGT will increase from £10,100 to £10,600 with effect from 6 April 2011.

Legislation will be introduced in Finance Bill 2012 to provide that the annual exemption will rise in line with the consumer prices index (CPI) instead of the retail prices index. This automatic indexation using the CPI will continue to be subject to override if Parliament determines that a different amount should apply.

## Entrepreneurs' Relief (ER)

ER was introduced in April 2008.

Subject to satisfying certain conditions, including the current lifetime limit of £5 million, capital gains on qualifying business disposals by individuals and certain trustees are eligible for ER. Qualifying gains are liable to CGT at 10%.

The lifetime limit is applied to the aggregate of gains that benefit from ER, whatever the year in which the disposal took place. Any gains in excess of the lifetime limit are liable to CGT at the same rates as other chargeable gains.

The lifetime limit will increase to £10 million with effect for qualifying business disposals on or after 6 April 2011.

Where individuals or trustees make qualifying gains above the £5m limit before 6 April 2011, no additional relief will be allowed for the excess.

## Inheritance Tax (IHT)

The IHT nil rate band is frozen at £325,000 until 2015. The government has announced that from 2015/16 increases in this figure will again be based on CPI.

## Reduced rate of tax

The government has announced that a reduced rate of IHT will apply where 10% or more of a deceased's net estate (after deducting IHT exemptions, reliefs and the nil rate band) is left to charity. In those cases the current 40% rate will be reduced to 36%. The new rate will apply to deaths occurring on or after 6 April 2012. The government will be consulting on the detailed implementation of this measure and will issue a consultation document before the summer.

## Stamp Duty Land Tax (SDLT)

Legislation will be introduced in Finance Bill 2011 to provide a relief for purchasers of residential property who acquire interests in more than one dwelling. Where the relief is claimed the rate of SDLT is determined not by the aggregate consideration but instead by the mean consideration (ie by the aggregate consideration divided by the number of dwellings) subject to a minimum rate of 1%.

# OTHER MATTERS

## Tax Simplification - review of reliefs

Based on recommendations made by the Office of Tax Simplification's review of tax reliefs, and continuing work by HMRC, the government intends to abolish 43 tax reliefs whose rationale is no longer valid. A minority (which are redundant) will be repealed in Finance Bill 2011. The other reliefs will be removed after consultation.

### Comment

Some of the reliefs that will be removed in due course include capital allowances for conversion of flats above business premises and the tax exemption for employees for receipt of luncheon vouchers (which only give exemption for 15p per day).

## VAT - Low Value Consignment Relief

Legislation will be introduced in Finance Bill 2011 to reduce the level at which the Low Value Consignment Relief applies from £18 to £15 from 1 November 2011. This is the threshold below which goods imported from outside the EU are VAT-free. The government will also explore options with the European Commission to limit the scope of the relief, including the possibility of seeking derogation from the relevant EU rules.

## Enterprise Zones

The government announced the location of ten new urban Enterprise Zones within the following Local Enterprise Partnership areas: Birmingham and Solihull; Leeds City Region; Sheffield City Region; Liverpool City Region; Greater Manchester; West of England; Tees Valley; North Eastern; the Black Country; and Derby, Derbyshire, Nottingham and Nottinghamshire. In addition, London will have an Enterprise Zone and be able to choose its site.

The government will make a range of policy tools available to all zones including:

- a 100% business rate discount worth up to £275,000 over a five year period for businesses that move into an Enterprise Zone during the course of this Parliament
- government and local authority help to develop radically simplified planning approaches in the zone.

It will consider, in a limited number of cases, the scope for introducing enhanced capital allowances.

## Business premises renovation allowance

The government has confirmed it will extend the business premises renovation allowance for a further five years from 2012.

## Anti-avoidance

The government has published 'Tackling Tax Avoidance', which:

- initiates reviews of legislation which have been subject to repeated attempts at tax avoidance
- outlines proposals to counter the continued use and marketing of artificial tax avoidance schemes.

The Budget also includes immediate measures which target specific avoidance schemes. These include:

- measures to address the abuse of stamp duty land tax rules
- amendments to the sale of lessors anti-avoidance legislation
- clarifying the degrouping charge rules affecting corporate gains.

# RATES AND ALLOWANCES 2011/12

## INCOME TAX RATES

2011/12		2010/11	
Band £	Rate %	Band £	Rate %
0 - 2,560	10*	0 - 2,440	10*
0 - 35,000	20**	0 - 37,400	20**
35,001 - 150,000	40*	37,401 - 150,000	40*
Over 150,000	50*	Over 150,000	50*

\*Only applicable to dividends and savings income. The 10% rate is not available if taxable non-savings income exceeds £2,560 (£2,440).

\*\* Except dividends (10%).

♦ Except dividends (32.5%).

• Except dividends (42.5%).

Other income taxed first, then savings income and finally dividends.

## INCOME TAX RELIEFS

		2011/12 £	2010/11 £
Personal allowance	- under 65	7,475	6,475
	- 65 - 74*	9,940	9,490
	- 75 and over*	10,090	9,640
(Reduce personal allowance by £1 for every £2 of adjusted net income over £100,000.)			
Married couple's allowance (relief at 10%)* (Either partner 75 or over and born before 6 April 1935.)		7,295	6,965
	- min. amount	2,800	2,670
*Age allowance income limit		24,000	22,900
(Reduce age allowance by £1 for every £2 of adjusted net income over £24,000 (£22,900).)			
Blind person's allowance		1,980	1,890

## TAX CREDITS

	2011/12 £	2010/11 £
<b>Working Tax Credit</b>		
Basic element		
- max.	1,920	1,920
Childcare element		
70% (80%) of eligible costs up to £175 per week (£300 if two or more children).		
<b>Child Tax Credit (CTC)</b>		
Child element		
per child - max.	2,555	2,300
Family element	545	545
Baby addition	-	545

### Reductions in maximum rates

41% (39%) of income above £6,420\* p.a.

\*If only CTC is claimed, the threshold is £15,860 (£16,190) p.a. The family element of CTC is not reduced unless income is more than £40,000 (£50,000) p.a. when the withdrawal rate is 41% (6.67%).

## PENSION PREMIUMS

- Tax relief available for personal contributions: higher of £3,600 (gross) or 100% of relevant earnings.
- Any contributions in excess of £50,000 (£255,000), whether personal or by the employer, may be subject to income tax on the individual.
- Where the £50,000 limit is not fully used it may be possible to carry the unused amount forward for three years.
- Employers will obtain tax relief on employer contributions if they are paid and made 'wholly and exclusively'. Tax relief for large contributions may be spread over several years.

## INDIVIDUAL SAVINGS ACCOUNTS (ISAs)

	2011/12 £	2010/11 £
Overall annual investment limit	10,680	10,200
Comprising - cash up to	5,340 max.	5,100 max.
- balance in stocks and shares	10,680 max.	10,200 max.

## CAR, VAN AND FUEL BENEFITS

### 2011/12

#### Company cars

- For diesel cars add a 3% supplement but maximum still 35%.
- A 0% rate applies to cars which cannot emit CO<sub>2</sub> when driven.
- A 5% rate applies to non-electric cars with emissions which do not exceed 75g/km.
- A 10% rate applies to non-electric cars with emissions which do not exceed 120g/km.
- The diesel supplement can apply to 75 and 120g/km cars.
- For cars registered before 1 January 1998 the charge is based on engine size.
- The list price includes accessories and is not subject to an upper limit.
- The list price is reduced for capital contributions made by the employee up to £5,000.

CO <sub>2</sub> emissions (gm/km) (round down to nearest 5gm/km)	% of car's list price taxed
up to 125	15
130	16
135	17
140	18
145	19
150	20
155	21
160	22
165	23
170	24
175	25
180	26
185	27
190	28
195	29
200	30
205	31
210	32
215	33
220	34
225 and above	35

#### Car fuel benefit 2011/12

£18,800 x 'appropriate percentage'

\*Percentage used to calculate the taxable benefit of the car for which the fuel is provided.

The charge does not apply to certain environmentally friendly cars.

The charge is proportionately reduced if provision of private fuel ceases part way through the year. The fuel benefit is reduced to nil only if the employee pays for all private fuel.

#### Van benefit per vehicle

##### 2011/12

Van benefit £3,000 Fuel benefit £550

The charges do not apply to vans which cannot emit CO<sub>2</sub> when driven or if a 'restricted private use condition' is met throughout the year.

## MILEAGE ALLOWANCE PAYMENTS

	2011/12 Rate per mile	These rates represent the maximum tax free mileage allowances for employees using their own vehicles for business. Any excess is taxable. If the employee receives less than the statutory rate, tax relief can be claimed on the difference.
<b>Cars and vans</b>		
Up to 10,000 miles	45p	
Over 10,000 miles	25p	
<b>Bicycles</b>	20p	
<b>Motorcycles</b>	24p	

## CAPITAL GAINS TAX

	2011/12 £	2010/11 23.6.10-5.4.11 £
<b>Individuals</b>		
Exemption	10,600	10,100
Standard rate	18%	18%
Higher rate*	28%	28% (18%)
<b>Trusts</b>		
Exemption	5,300	5,050
Rate	28%	28% (18%)

\*For higher and additional rate taxpayers.

#### Entrepreneurs' Relief

For disposals on or after 6 April 2011 the first £10m (£5m for disposals on or after 23 June 2010 and before 6 April 2011) of qualifying gains are charged at 10%. Gains in excess of the limit are charged at the rates detailed above.

## CORPORATION TAX

	Year to 31.3.12		Year to 31.3.11	
	Profits band £	Rate %	Profits band £	Rate %
Small profits rate	0 - 300,000	20*	0 - 300,000	21*
Marginal (small profits) rate	300,001 - 1,500,000	27.5*	300,001 - 1,500,000	29.75*
Main rate	Over 1,500,000	26*	Over 1,500,000	28*
Standard fraction		3/200*		7/400*

The profits limits are reduced for accounting periods of less than 12 months and for a company with associated companies.

\*Different rates apply for ring-fenced (broadly oil industry) profit.

## STAMP DUTY AND STAMP DUTY LAND TAX

Land and buildings (on full consideration paid)			
Rate	Residential property*		Non-residential
	Disadvantaged areas	Other	£
	£	£	
Nil	0 - 150,000	0 - 125,000	0 - 150,000
1%*	150,001 - 250,000*	125,001 - 250,000*	150,001 - 250,000
3%	250,001 - 500,000	250,001 - 500,000	250,001 - 500,000
4%	500,001 - 1,000,000	500,001 - 1,000,000	Over 500,000
5%**	Over 1,000,000**	Over 1,000,000**	-

\* Relief available for first time buyers for transactions with an effective date on or after 25 March 2010 and before 25 March 2012.

\*\* For transactions with an effective date on or after 6 April 2011.

Shares and securities - rate 0.5%.

## INHERITANCE TAX

Death rate %	Lifetime rate %	Chargeable transfers 2011/12 and 2010/11 £'000
Nil	Nil	0 - 325*
40	20	Over 325*

\*Potentially increased for surviving spouses or civil partners who die on or after 9 October 2007.

### Reliefs

Annual exemption	£3,000	Marriage - parent	£5,000
Small gifts	£250	- grandparent	£2,500
		- bride/groom	£2,500
		- other	£1,000

### Reduced charge on gifts within seven years of death

Years before death	0-3	3-4	4-5	5-6	6-7
% of death charge	100	80	60	40	20

## NATIONAL INSURANCE

### 2011/12 Class 1 (employed) contracted in rates

Employee		Employer	
Earnings per week	%	Earnings per week	%
Up to £139	Nil*	Up to £136	Nil
£139.01 - £817	12	Over £136	13.8
Over £817	2		

\* Entitlement to contribution-based benefits retained for earnings between £102 and £139 per week.

<b>Class 1A (employers)</b>	13.8% on employee taxable benefits
<b>Class 1B (employers)</b>	13.8% on PAYE Settlement Agreements
<b>Class 2 (self-employed)</b>	flat rate per week £2.50 small earnings exception £5,315 p.a.
<b>Class 3 (voluntary)</b>	flat rate per week £12.60
<b>Class 4 (self-employed)</b>	9% on profits between £7,225 and £42,475 plus 2% on profits over £42,475

This summary is published for the information of clients. It provides only an overview of the main proposals announced by the Chancellor of the Exchequer in his Budget Statement, and no action should be taken without consulting the detailed legislation or seeking professional advice. Therefore no responsibility for loss occasioned by any person acting or refraining from action as a result of the material contained in this summary can be accepted by the authors or the firm.

## MAIN SOCIAL SECURITY BENEFITS

Weekly benefit	2011/12	2010/11
<b>Basic retirement pension</b> - single person	£102.15	£97.65
- married couple	£163.35	£156.15
<b>Statutory pay rates</b> - average weekly earnings £102 (£97) or over		
Statutory Sick Pay	£81.60	£79.15
Statutory Maternity Pay		
First six weeks		90% of weekly earnings
Next 33 weeks	£128.73*	£124.88*
Statutory Paternity Pay - two weeks	£128.73*	£124.88*
Statutory Adoption Pay - 39 weeks	£128.73*	£124.88*

\*Or 90% of weekly earnings if lower.

Additional Paternity Pay and Leave may be available for a child due or adoptions matched on or after 3 April 2011.

## VALUE ADDED TAX

Standard rate	20%
Reduced rate	5%
Annual Registration Limit - from 1.4.11 (1.4.10 - 31.3.11 £70,000)	£73,000
Annual Deregistration Limit - from 1.4.11 (1.4.10 - 31.3.11 £68,000)	£71,000

## CAPITAL ALLOWANCES

### Plant and machinery - Annual Investment Allowance (AIA)

The AIA gives a 100% write-off on most types of plant and machinery costs, including integral features and long life assets but not cars, of up to £100,000 p.a. (£50,000 for expenditure incurred before 6 April 2010 (1 April 2010 for companies). Special rules apply for accounting periods straddling these dates.)

Any costs over the AIA fall into the normal capital allowance pools at either 10% or 20%. The AIA may need to be shared between certain businesses under common ownership.

### Other plant and machinery allowances

The annual rate of allowance is 20%. A 10% rate applies to expenditure incurred on integral features and on long life assets.

A 100% first year allowance may be available on certain energy efficient plant and cars, including expenditure incurred on new and unused zero emission goods vehicles on or after 6 April 2010 (1 April 2010 for companies).

### Cars

For expenditure incurred on cars on or after 6 April 2009 (1 April 2009 for companies), costs are generally allocated to one of the two plant and machinery pools. Cars with CO<sub>2</sub> emissions not exceeding 160gm/km receive a 20% allowance p.a. Cars with CO<sub>2</sub> emissions over 160gm/km receive a 10% allowance p.a.

### Industrial and agricultural buildings and hotels

The annual rate of allowance is nil (1% from 6 April 2011 (1 April 2011 for companies). Special rules apply for accounting periods straddling these dates.

## SELF ASSESSMENT: KEY DATES 2011/12

**31 July 2011** - Second payment on account for 2010/11.

**5 October 2011** - Deadline for notifying HMRC of new sources of income if no tax return has been issued for 2010/11.

**31 October 2011** - Deadline for submission of 2010/11 non-electronic returns.

**31 January 2012** - Deadline for filing electronic tax returns for 2010/11. Balancing payment due for 2010/11. First payment on account due for 2011/12.

## ***Dudley Office***

***Tel: 01384 254453***

***Fax: 01384 456218***

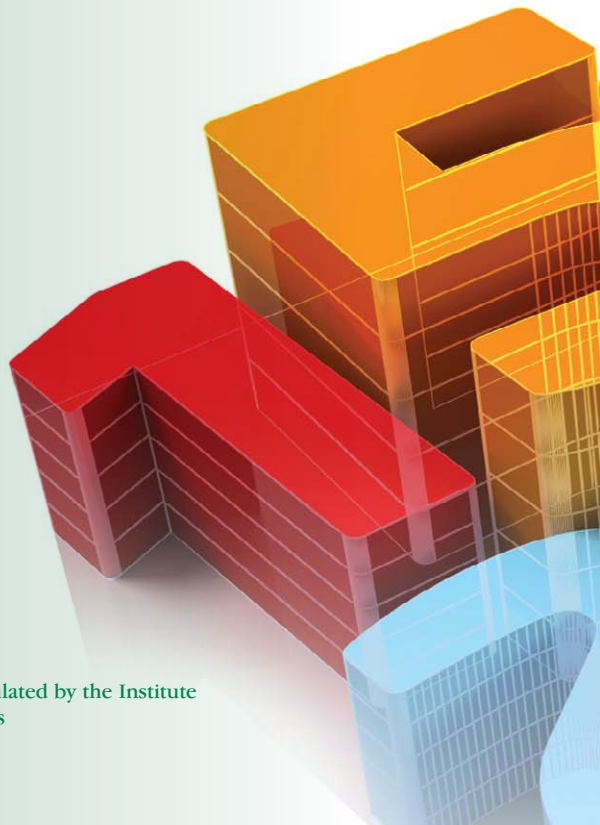
***e-mail: [dudley@wortonrock.co.uk](mailto:dudley@wortonrock.co.uk)***

## ***Kidderminster Office***

***Tel: 01562 66333***

***Fax: 01562 746982***

***e-mail: [kidderminster@wortonrock.co.uk](mailto:kidderminster@wortonrock.co.uk)***



The Dudley and Kidderminster offices are Regulated by the Institute of Chartered Accountants in England and Wales for a range of investment business activities